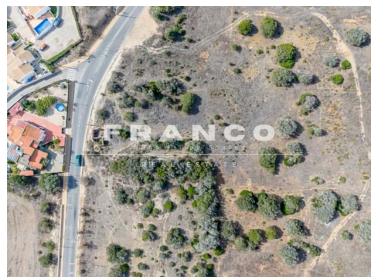




## Luz - Land



**462**

Area (m²)



**10600**

Land Area (m²)

**995 000 €**

(EUR €)

## 10600m2 Plot with a ruin and approved project for the construction of a Rural Tourism PRAIA DA LUZ - LAGOS

Charming 10600m2 Plot, located in Valverde, Praia da Luz, in the Municipality of Lagos.

The Property has excellent access.

The Project is approved.

The Rural Tourism Project includes 11 accommodation units, swimming pools, parking and green spaces. It is South oriented, with the top floor benefiting from a sea view towards Praia da Luz.

The construction area is 462m2.

Don't hesitate to get in touch for more information or to come and view this property, full of potential!



**Nuno Franco**

nuno.fsfranco@gmail.com

**T +351 933062315 <sup>2</sup> · E nuno@franco-realestate.com**

**AMI 21961**

<sup>1</sup> (Call to national fixed network) | <sup>2</sup> (Call to national mobile network)



## Property Features

- Proximity: Beach, Golf course, Restaurants, City, Open field, Hospital, Schools, Playground
- Views: Countryside views
- Solar orientation: South, West



**Nuno Franco**

nuno.fsfranco@gmail.com

**T +351 933062315 <sup>2</sup> · E nuno@franco-realestate.com**  
**AMI 21961**

<sup>1</sup> (Call to national fixed network) | <sup>2</sup> (Call to national mobile network)